

## BT5924

### EXTERNAL POLE JOINER FOR Ø1.5" POLES

The BT5924 is an external joiner from B-Tech's System V Range; a collection of components designed for the installation of CCTV and other ceiling mounted equipment. Designed for use with BT5935 Ø1.5" poles, the joiner allows for an extended drop of System V installations, fixing over the ends of the two poles to create a rigid join. Adding compatible B-Tech mounting interfaces and accessory collars to mount CCTV dome cameras and other AV equipment such as flat screens, allows users of System V to create custom ceiling mounted solutions that suit their specific needs.

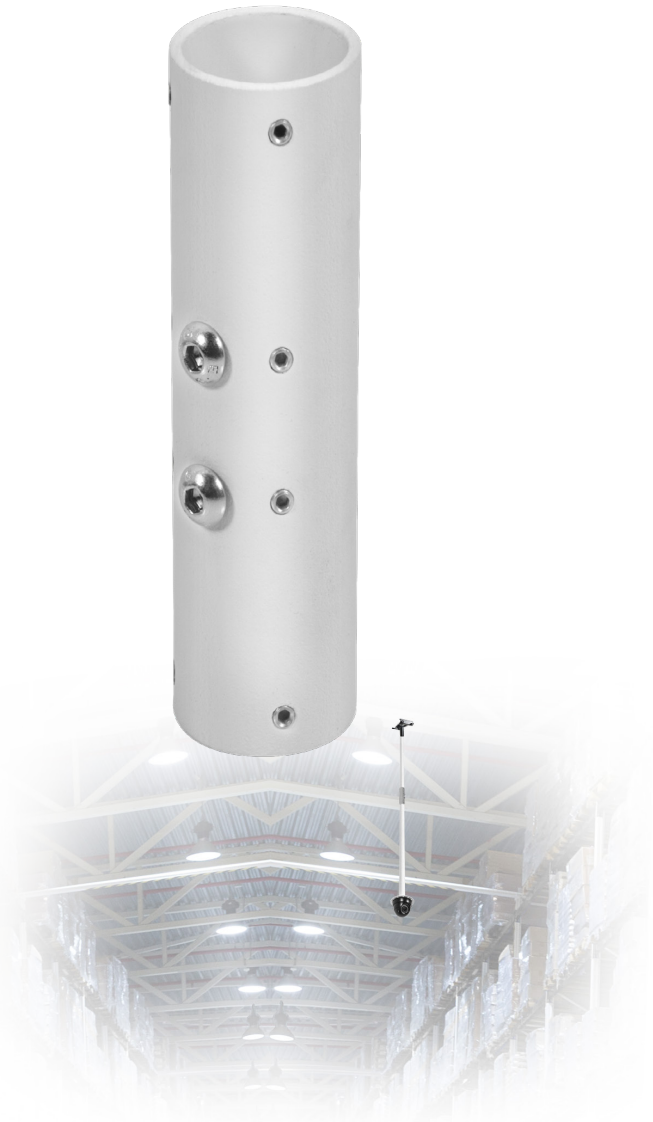
#### SPECIFICATIONS

External dimensions	<b>6" x 1.8"</b>
Internal diameter	<b>Ø1.5"</b>
Color	<b>White</b>

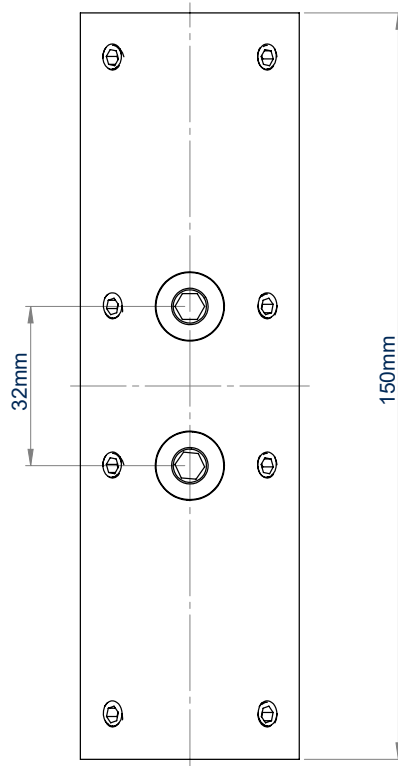
#### FEATURES

- 1 Attaches directly to BT5935 Ø1.5" poles
  - 2 0.2" heavy duty steel capable of supporting substantial loads
  - 3 Safety bolt holes ensure a secure connection to System V poles
  - 4 Allows a rigid external join of 2x BT5935 poles to extend the drop of System V installations
- Multiple grub screws allow micro-adjustment of the pole to ensure a perfectly angled drop
  - Allows cables to pass through the poles and joiner
  - Create a variety of ceiling mounted CCTV installs using System V's range of components

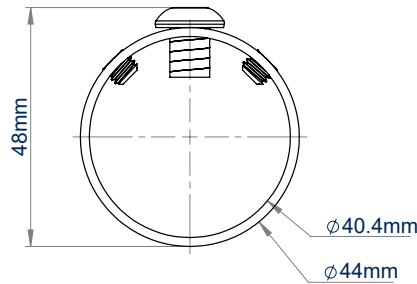
## SYSTEM V



# BT5924



**SIDE VIEW**



**TOP VIEW**

## ORDERING INFORMATION

COLOR	ORDER REF	BARCODE
White	BT5924/W	5019318304064

## RELATED PRODUCTS

PRODUCT CODE	NAME	DESCRIPTION
BT5935	1.5" Diameter Poles	Available in 1 metre or 2 metre lengths
BT5910	Dome Security Camera Mount	Carousel mount for small / medium dome CCTV cameras
BT5920	Fixed Ceiling Mount	Mounts BT5935 $\phi$ 1.5" poles to the ceiling
BT5950	$\phi$ 1.5" Pole Adaptor for System 2	Adaptor allows BT5935 poles to fit to B-Tech's System 2 $\phi$ 2" mounts

© 2025 B-Tech AV Mounts Co. Ltd. All rights reserved.  
The information in this specification sheet reflects the current technical specifications at the time of printing.  
We reserve the right to change the technical or physical specifications without prior notice. The B-Tech name and the B-Tech logo are registered trademarks of B-Tech AV Mounts Co. Ltd.  
B-Tech is not responsible for any loss or damage caused by improper installation or mounting on unsuitable structures. Any reproduction or use without permission or registration of any part of this specification sheet is strictly prohibited unless prior written permission is granted by B-Tech AV Mounts Co. Ltd. 2025.

SS-V2-BT5924-230725