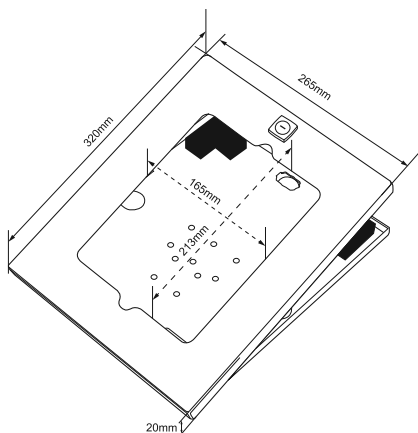
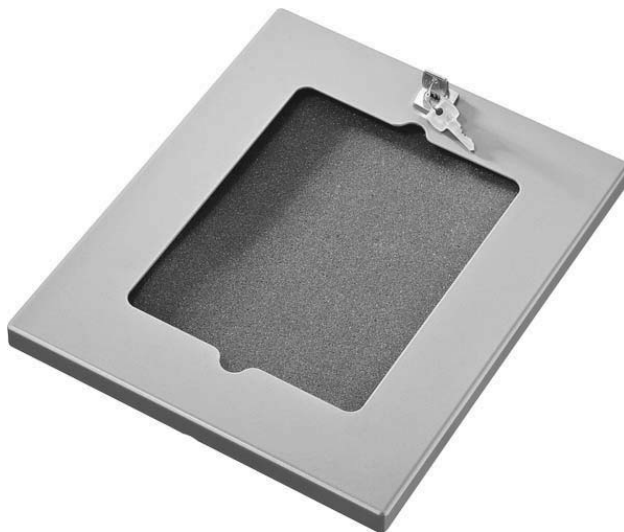




BT7390 TABLET ENCLOSURE INSTALLATION INSTRUCTIONS

This Pack Contains 1 Tablet Enclosure

PLEASE KEEP THIS FOR FUTURE REFERENCE



FEATURES

- Use with *BT7392*, *BT7393*, *BT7394*, *BT7395* and *BT7396* tablet enclosure stands and mounts
- Can also be fitted directly to the wall or to any B-Tech bracket that uses 100 x 100 VESA® fixing patterns
- Enclosure is lockable to prevent un-authorised access
- Integrated cable management allows access for power cable
- Can be mounted in a landscape or portrait display

B-TECH AUDIO VIDEO MOUNTS

HEAD OFFICE

B-Tech International Limited

Bennett House, Long March, Daventry, Northants., NN11 4NR, UK

Email: info@btechavmounts.com

©2016 B-Tech International Limited. All rights reserved. B-Tech Audio Video Mounts is a division of B-Tech International Limited. B-Tech, Better By Design and are registered trademarks of B-Tech International Limited. All other brands and product names are trademarks of their respective owners. Photographs are for illustrative purposes only. E&OE, B-Tech International Ltd, its distributors and dealers are not responsible for damage or injury caused by improper installation, improper use, modifications, installations over the specified weight capacity and/or failure to observe these safety instructions. In such cases, any warranty will expire. It is recommended that this product should only be installed by a qualified professional / installer. B-Tech does not claim any liability for any difficulties that may arise from the interpretation of information contained in these instructions. Failure to mount this product correctly may lead to serious injury and/or death. Please check carefully to make sure there are no missing or defective parts - defective parts must never be used. In the event of missing and/or defective parts, or technical questions, please contact an authorised dealer.

www.btechavmounts.com

AMA-BT7390-V1-PROBX-0316-82 MADE IN THE EU



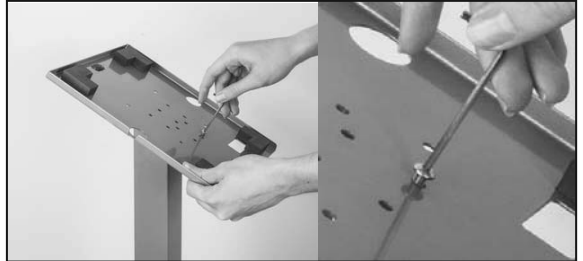
BT7392

FLOOR STAND - FOR USE WITH THE BT7390 INSTALLATION INSTRUCTIONS

PLEASE KEEP THIS FOR FUTURE REFERENCE

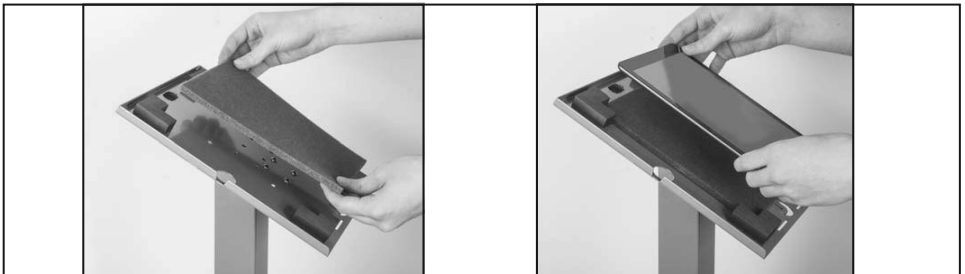


Remove tablet enclosure lid and foam pad before installation.

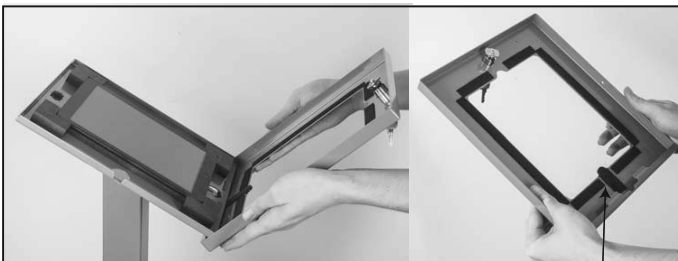


i. Use the 4 allen screws supplied with the stand to attach enclosure base to stand.

Note: The enclosure can be mounted in either a portrait or landscape display.



ii. Place the foam protective pad onto enclosure base before securely adding the tablet.



iii. Re-Attach lid to enclosure. If using a BT7391 Home Button Clip, attach to lid before mounting.

BT7391

iii. Lock tablet enclosure.

THESE INSTRUCTIONS ARE INTENDED AS A GUIDE ONLY AND B-TECH ACCEPTS NO LIABILITY FOR THE ACCURACY OF THE INFORMATION CONTAINED IN THIS DOCUMENT.