

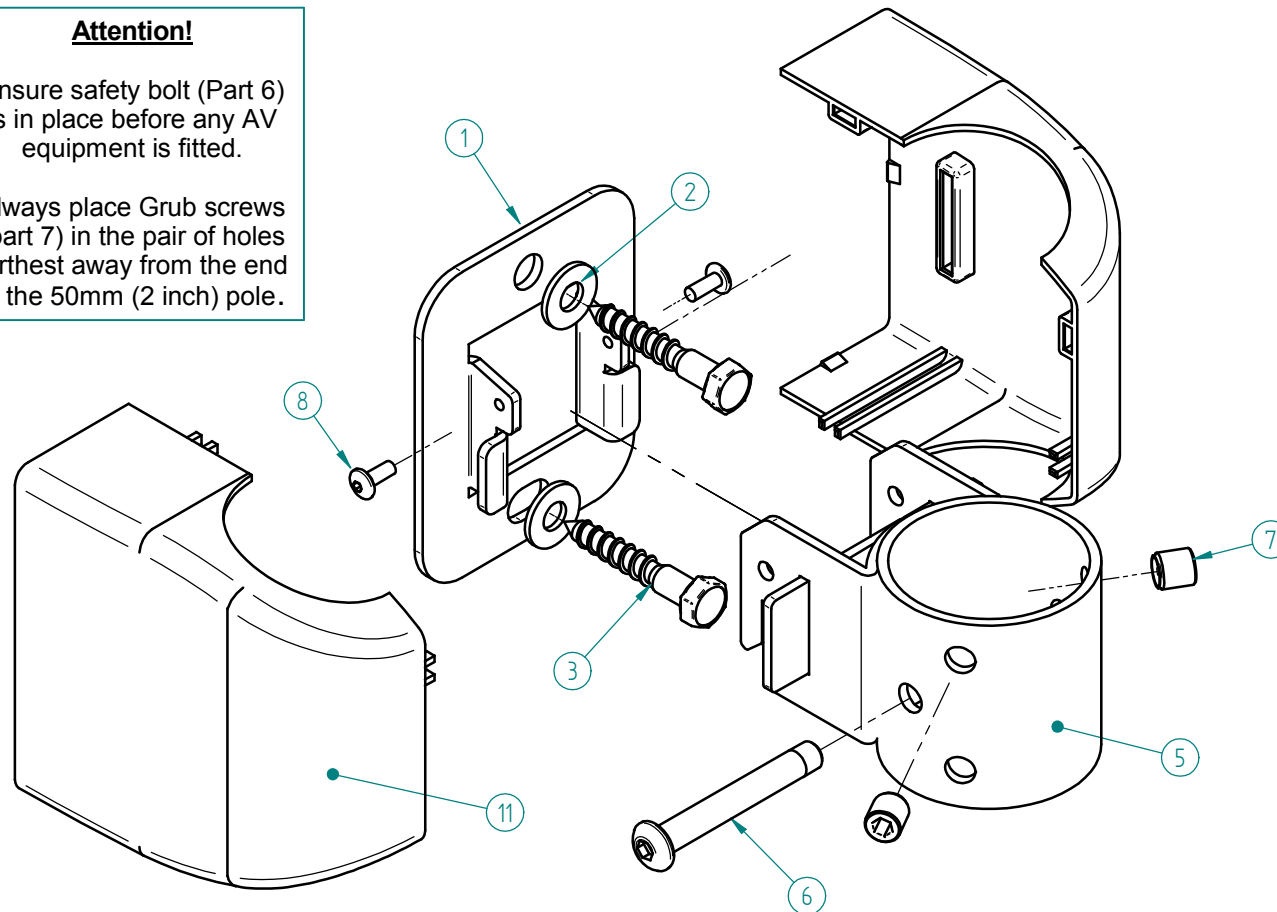
BT7830

WALL BRACKET FOR MOUNTING VERTICAL 50MM (2 INCH) POLES

Attention!

Ensure safety bolt (Part 6)
is in place before any AV
equipment is fitted.

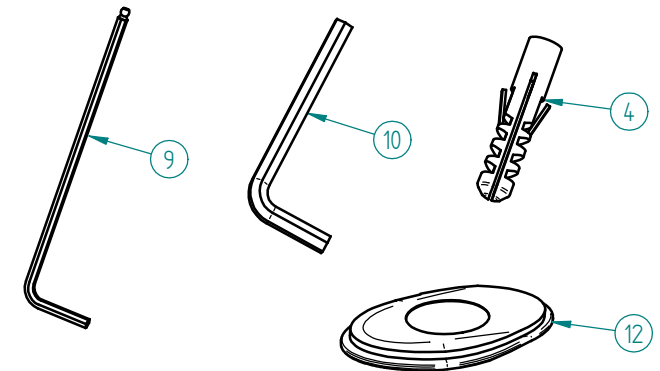
Always place Grub screws
(part 7) in the pair of holes
furthest away from the end
of the 50mm (2 inch) pole.



PARTS LIST

No	PART NAME	QTY
1	WALL PLATE	1
2	M8 OD19 T2 PLAIN WASHER	2
3	M8 X 50 COACH SCREW	2
4	10MM WALL PLUG	2
5	HOOK TUBE ASSEMBLY	1
6	M8 X 60 ALLEN SAFETY BOLT	1
7	M10 X 10 GRUB SCREW	2
8	M4 X 10 ALLEN SCREWS	2
9	2.5MM BALL ALLEN KEY, PART 8	1
10	5MM ALLEN KEY, PART 6 + 7	1
11	PLASTIC COVER HALF	2
12	PLASTIC HOLE COVER	1

PLEASE KEEP THIS PARTS LIST FOR FUTURE REFERENCE



B-Tech International Ltd,
4 Meridian Centre, Croydon, CRO 9UG, UK.
Tel: +44 (0)844 800 0445 Fax: +44 (0)844 800 0446
Email: info@b-tech-int.com

B-Tech PRO-AV bvba,
Brixtonlaan 32, Zaventem 1930, Brussels, Belgium.
Tel: +32 (0)2 720 92 71 Fax: +32 (0)2 725 42 15
Email: info@btechproav.com

B-Tech Audio Video Mounts,
Buffalo, NY 14215, USA.
Tel: (1)800 975 5812 Fax: (1)800 592 2876
Email: info@btechavmounts.com

B-Tech International (Hong Kong) Ltd,
23rd Floor, Manulife Tower, North Point, HK.
Tel: (+852) 2556 7337 Fax: (+852) 2556 7321
Email: info@b-tech-int.com.hk

www.btechavmounts.com