



FOLDS FLAT TO THE WALL

BT8237 FLAT SCREEN ARTICULATING WALL MOUNT

Designed for medium to large sized screens, the BT8237 supports weights up to 176lbs and features a low-profile design that mounts screens just 3" from the wall. The universal interface accommodates mounting patterns up to 600 x 400 and comes with adjustment screws that allow the screen to be leveled once mounted.

SPECIFICATION

Recommended screen size	32" - 75"
Max load	176lbs
VESA compatibility	200 x 100 up to 600 x 400
Distance from wall (flat)	3"
Distance from wall (extended)	27.5"
Swivel	120°

FEATURES

- Twin arms with three swivel points for a multitude of positioning options
- Folds flat to the wall
- Central keyhole fixing point for an easy fix and level adjustment
- Six cable management clips supplied to ensure a tidy install
- All fixing points are concealed behind attractive coverplates to hide fixings
- Mount has a 27.5" extension range from the wall
- Lateral shift of the screen once mounted
- Leveling screws allow adjustment of screen height
- Security fixings prevent unauthorised removal
- Padlock tabs on arms for additional security (padlock not included)



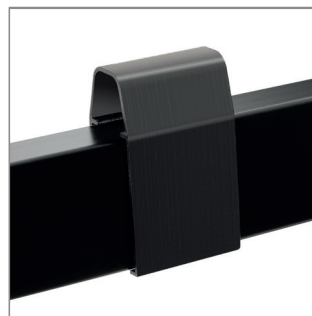
75" 178cm | VESA 600 x 400 | 176 LBS | 120° | Cable Management



Twin arms with three swivel points for a multitude of positioning options.



Padlock tabs on arms for additional security (padlock not included).



Six cable management clips supplied to ensure a tidy install.



Slim design folds flat to the wall.

