

BT8390-CMC

SYSTEM X™ CABLE MANAGEMENT CLIP

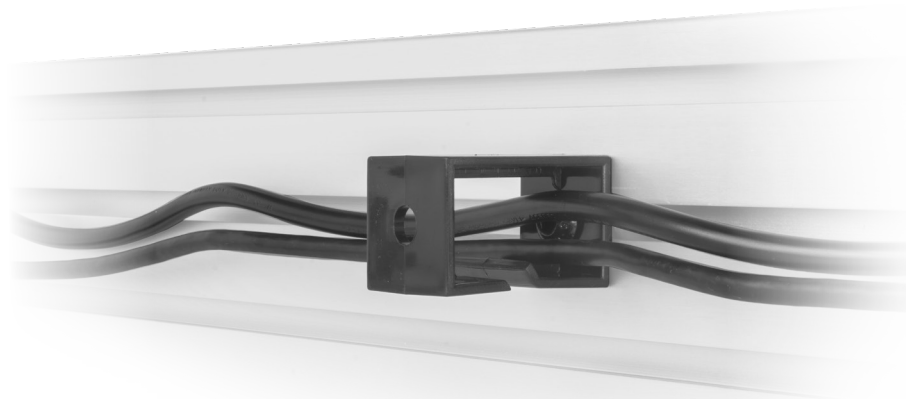
Designed as a reliable and flexible solution to fix cabling discreetly behind, below or on top of System X BT8390 mounting rails. The BT8390-CMC is available in packs of 3 and secured to the rail using an M8 Sliding Nut.

SPECIFICATIONS

Number per pack	3
Height	1.2"
Width	1.2"
Depth	2"
Color	Black

FEATURES

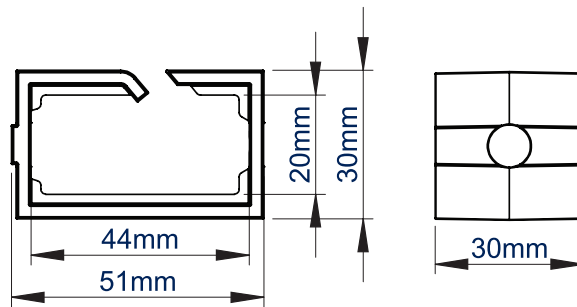
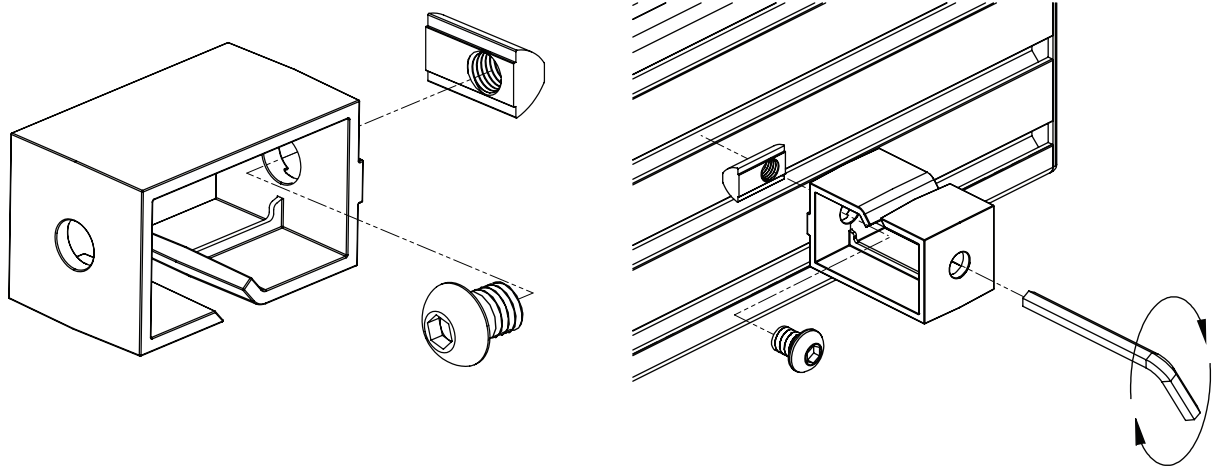
- 1 Easy access clip can hold multiple cables, ideal for multi screen installations
 - 2 All mounting hardware included
 - 3 Can be positioned anywhere along the mounting rail, including underneath
 - 4 System X compatible
- Supplied with Sliding Nuts
 - Works with BT8390, BT8392 & BT8393 mounting rails
 - Cable management for a neat and tidy installation
 - Can be retrospectively fitted onto existing installations



SYSTEM X



BT8390-CMC



SIDE VIEW

FRONT VIEW

ORDERING INFORMATION

COLOR	ORDER REF	BARCODE
Black	BT8380-CMC/B	50193118501661

RELATED PRODUCTS

PRODUCT CODE	NAME	DESCRIPTION
BT8390	Mounting Rail	Fits to columns, walls or poles using System X components
BT8390-AAC	Angle Adjustment Connector	Allows System X mounting rails to be joined with an adjustable angle
BT8390-WFK4	Wall-to-Wall Rail Mounting Bracket	Designed to fix BT8390 mounting rails between opposing walls
BT8380-WTB	Wall Tie-Back	Provides stability to B-Tech installations