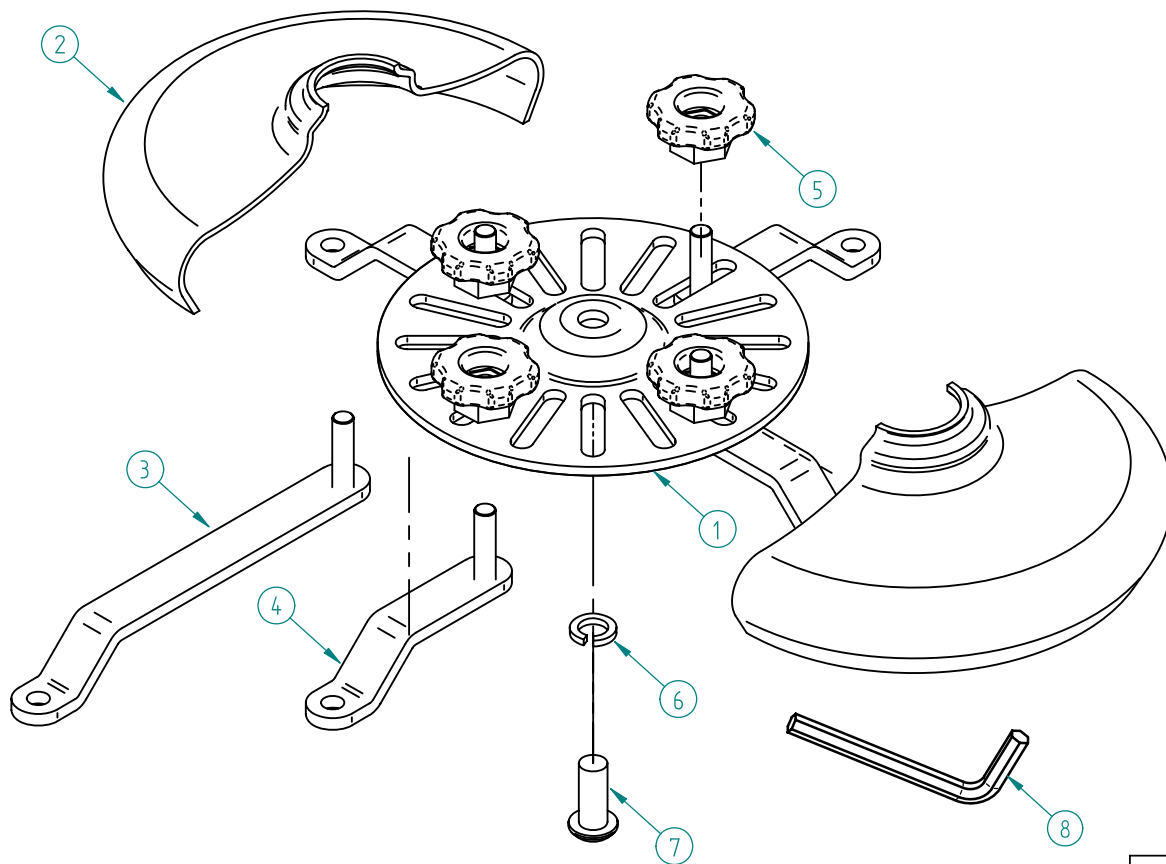


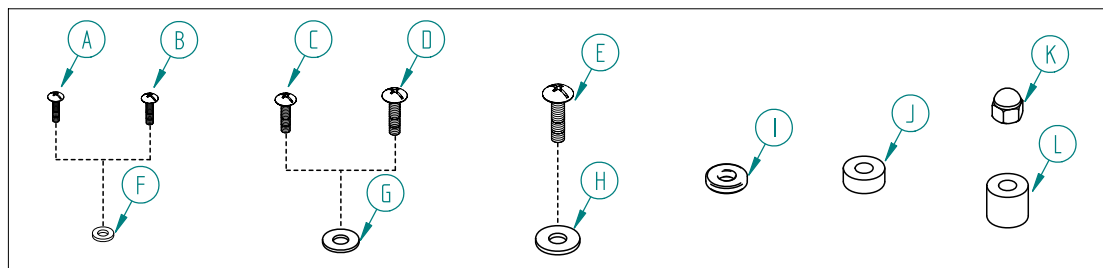


BT880 - UN2

PARTS LIST



REF	PART NAME	QTY
1	CAROUSEL	1
2	COVER PLATE HALF	2
3	LONG MOUNTING LEG	4
4	SHORT MOUNTING LEG	4
5	M6 THUMBWHEEL	4
6	M8 SPRING WASHER	1
7	M8 X 20 HEX SCREW	1
8	5mm HEX KEY (FOR PART 7)	1
INTERFACE KIT		
A	M2.5 X 12 CROSS SCREW	4
B	M3 X 12 CROSS SCREW	4
C	M4 X 12 CROSS SCREW	4
D	M5 X 12 CROSS SCREW	4
E	M6 X 12 CROSS SCREW	4
F	M3 METAL WASHER	4
G	M5 METAL WASHER	4
H	M6 METAL WASHER	4
I	M6*T3 METAL WASHER	4
J	M6*T6 METAL WASHER	4
K	M6 DOME NUT	4
L	M6*T11 SPACER	4



DESIGNED FOR USE WITH BT880 STYLE BALL JOINT. FOR AVIBALL PRODUCTS USE BT888 PROJECTOR MOUNT.

SUITABLE FOR M6, M5, M4, M3 AND M2.5 MOUNTING HOLES. PLEASE USE THE APPROPRIATE SCREWS AND WASHERS (PARTS A - H) AS ILLUSTRATED.

THE LEGS (PARTS 3 + 4) CAN BE USED IN ANY NUMBER OR COMBINATION TO SUIT YOUR PARTICULAR EQUIPMENT.

PARTS I - J ARE OPTIONAL AND CAN BE USED AS SPACERS AT THE INSTALLERS DISCRETION. PARTS L AND K CAN BE USED INSTEAD OF HAND WHEELS.