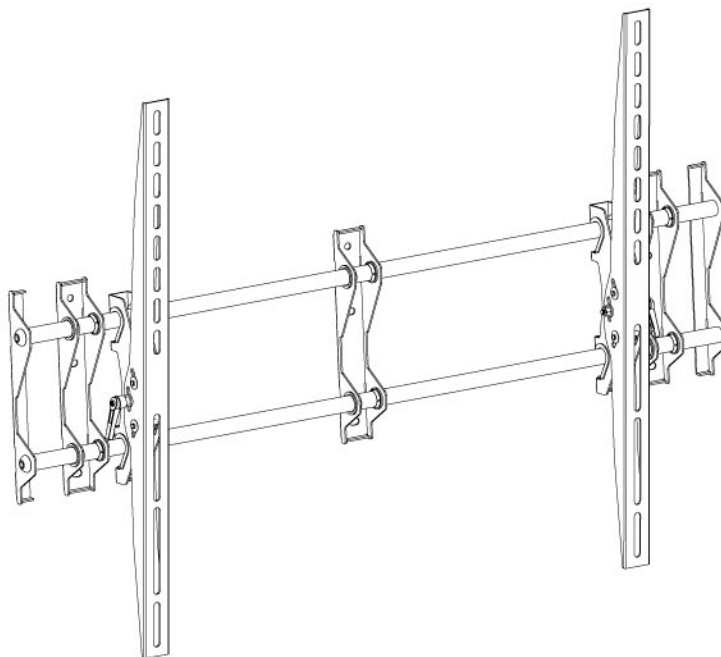




# LARGE FLAT PANEL WALL MOUNT WITH TILT

- Designed for Flat Panel Displays between 40" - 72"
- Suitable for screens with a weight up to 113Kg (250lbs).

## ASSEMBLY AND INSTALLATION GUIDE



### Important Safety Instructions:

**Do not install this product until the instructions and warnings have been read and understood thoroughly.**

***Please keep these instructions for future reference.***

Due to the weight of Flat Panel screens and their fragile nature, B-Tech recommends that a professional installer is used when mounting this bracket.

If you do not understand the instructions provided, or are not sure how to install this product, please contact a professional for advice and /or to install this mount. Failure to mount this bracket correctly may lead to serious injury and / or death. Please pay careful attention to where this mount is located. Some walls are not suitable for installation. If you install this mount on drywall it must be anchored into a wood stud, concrete block or brick behind the drywall. It is not suitable for securing to steel studs or weak concrete / brick. Installing on drywall alone will not support the weight of a flat panel screen. Ensure sufficient space and safety distance is allowed when installing this product. If installing in a public area, or over the likely path of pedestrians, this product should be mounted as far as possible from the public / pedestrians.

When drilling holes it is particularly important to take care of electrical cables, water or gas pipes in the wall.

It is important that all fixing screws supplied are used. If the fixing screws included are not sufficient for the wall you are mounting this product on, please consult your local hardware store.

The screen attached must weigh no more than the recommended weight of 113 Kg (250lbs).

This mount must be mounted on a wall horizontally to prevent free motion due to the weight of the screen when adjusting the position. Ensure that when installing your screen on this mount, that the correct viewing distance and angles are observed, as well as avoiding any direct or reflected glare including glare from electric lighting etc. If there is any doubt, consult the instruction manual of your screen.

Proper attention should be paid when laying the connecting cables so that they do not cause a hazard.

It is recommended that periodic inspections are made of the mount to ensure that there is no change to the fixings or mount.

When cleaning the mount, use dry cloth only.

B-Tech International Limited, its distributors and dealers are not liable or responsible for damage or injury caused by improper installation, improper use or failure to observe these safety instructions. In such cases any guarantee will expire.



### CAUTION:

This wall mount is intended for use only with the maximum weights indicated. Use with heavier than the maximum weights indicated may result in instability causing possible injury

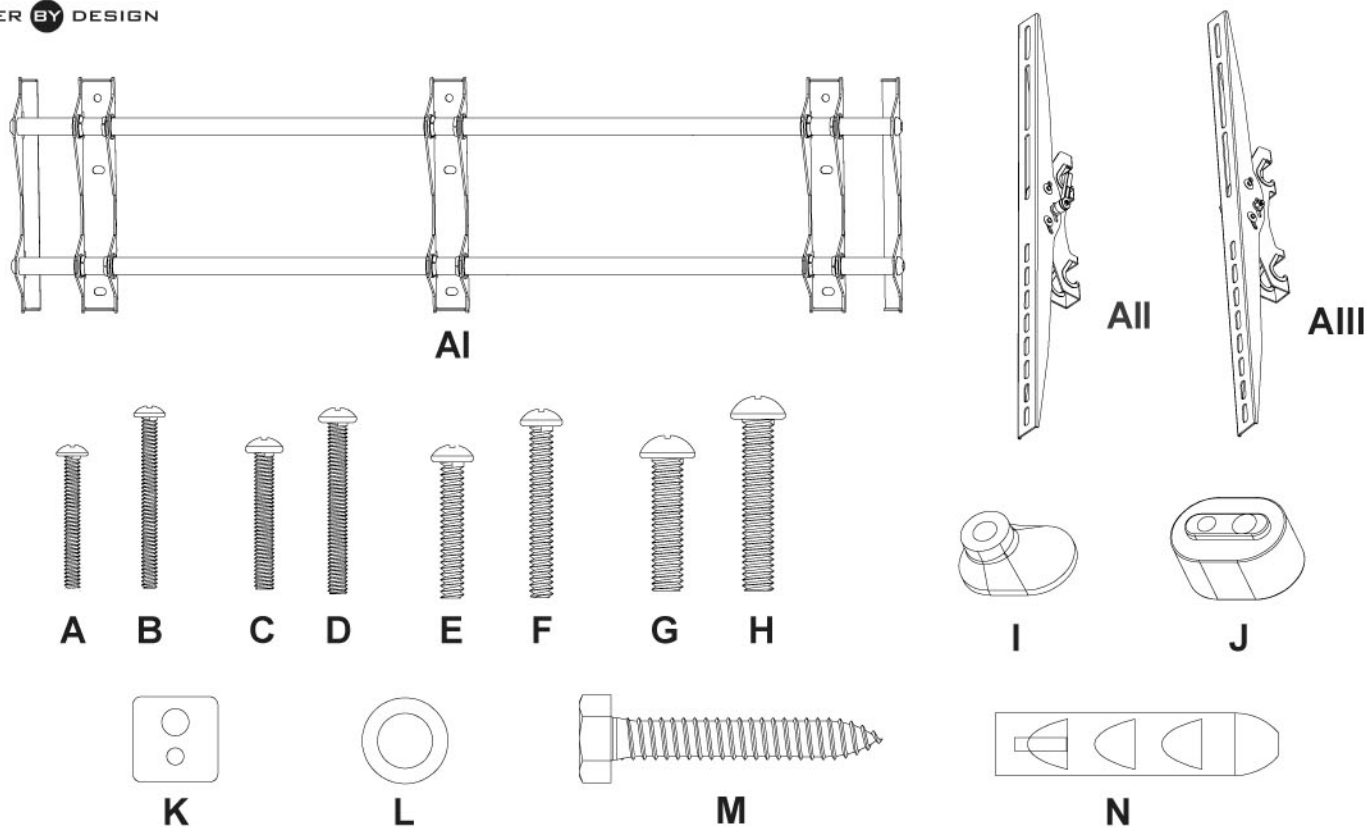
For more information on B-Tech Audio Video Mounts, please visit: [www.btechavmounts.com](http://www.btechavmounts.com)

**B-Tech International Limited**  
Long March, Daventry,  
Northants, NN11 4NR, U.K.  
[info@b-tech-int.com](mailto:info@b-tech-int.com)

©COPYRIGHT 2007

**B-Tech Audio Video Mounts**  
Sparks, NV. 89431, USA  
Tel: 1 800 975 5812 • Fax: 1 800 592 2876  
[info@btechavmounts.com](mailto:info@btechavmounts.com)

## Parts List



	Description	Qty.
AI	Wall plate	1
AII	Left vertical arm	1
AIII	Right vertical arm	1
A	Screw M4 x 35 mm	4
B	Screw M4 x 45 mm	4
C	Screw M5 x 35 mm	4
D	Screw M5 x 45 mm	4
E	Screw M6 x 35 mm	4
F	Screw M6 x 45 mm	4
G	Screw M8 x 35 mm	4
H	Screw M8 x 45 mm	4
I	Spacer	4
J	Large Spacer	4
K	Multi Washer	4
L	Metal Washer	9
M	Coach Screw	9
N	Wall Plug	9

### Tools Required

- Stud finder
- Crosshead screwdriver
- ø6.0mm drill bit, ø10.0mm masonry drill bit (concrete/brick installation only)
- Wrench or sleeve

**IMPORTANT :**  
DUE TO THE HEAVY WEIGHT OF FLAT PANEL SCREENS, B-TECH RECOMMENDS THAT A PROFESSIONAL INSTALLER IS USED WHEN MOUNTING THIS BRACKET AND PLASMA. B-TECH INTERNATIONAL LTD., ITS DISTRIBUTORS AND DEALERS ARE NOT RESPONSIBLE FOR DAMAGE OR INJURY CAUSED BY IMPROPER INSTALLATION.

## INSTALLING VERTICAL ARMS TO MONITOR

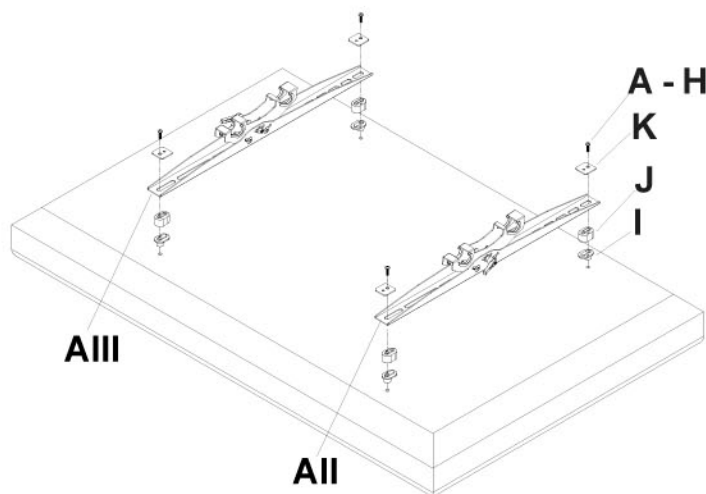
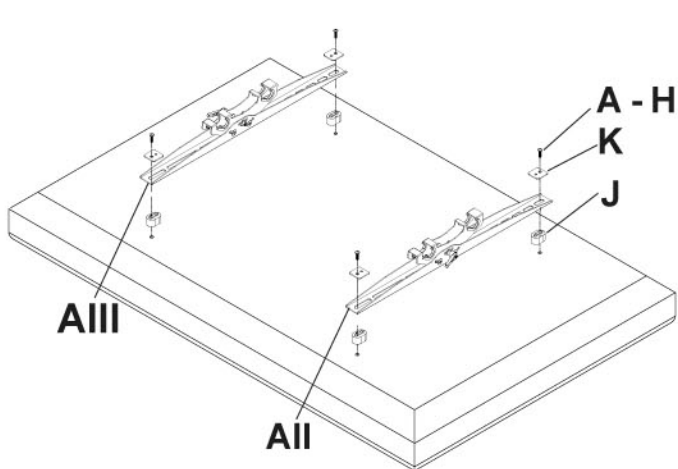
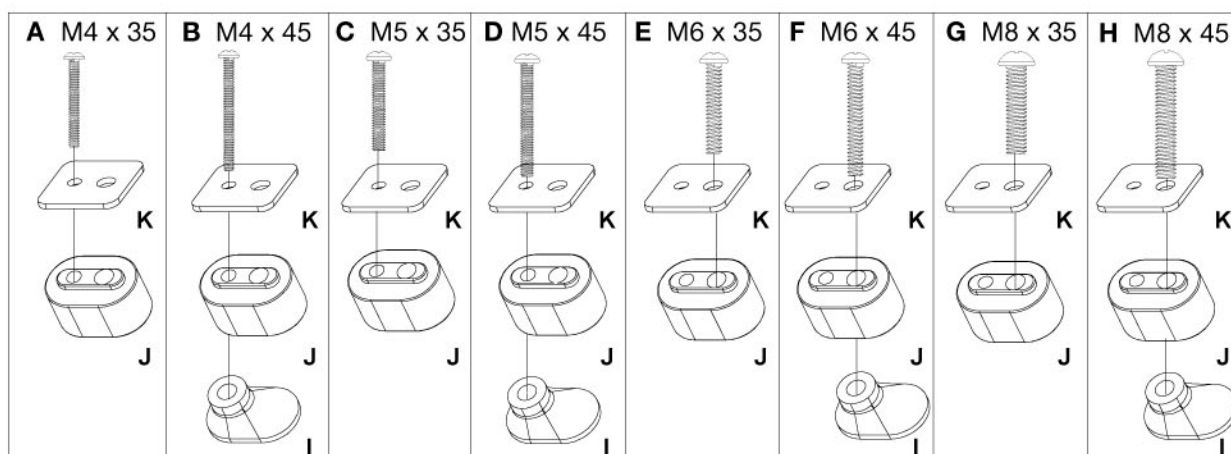
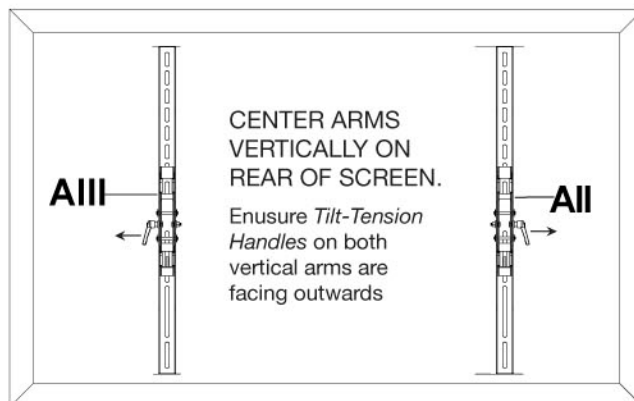
### 1 Mount arms to screen

Place the Flat Panel screen face down on the floor, table or other suitable surface that can support the weight of the screen (take care not to damage the screen - lay cloth flat under screen to prevent scratching).

Note where the mounting holes are located on the back of the casing. On most flat screens, there are two sets of vertical parallel holes (This may vary depending upon type of screen). Place Vertical Arms (**Parts AII and AIII**) on back of screen, align to holes, and center on back of screen. From the comprehensive fixing kit supplied, choose the applicable Screws (M4, M5, M6 or M8), Multi-Washers and Spacers according to the mounting holes on the casing.

**IMPORTANT :** Always tighten the bolts by hand first to ensure that they are the correct thread size. Using incorrect screws can cause permanent damage to the screen

**Note:** Top and bottom holes must always be used.



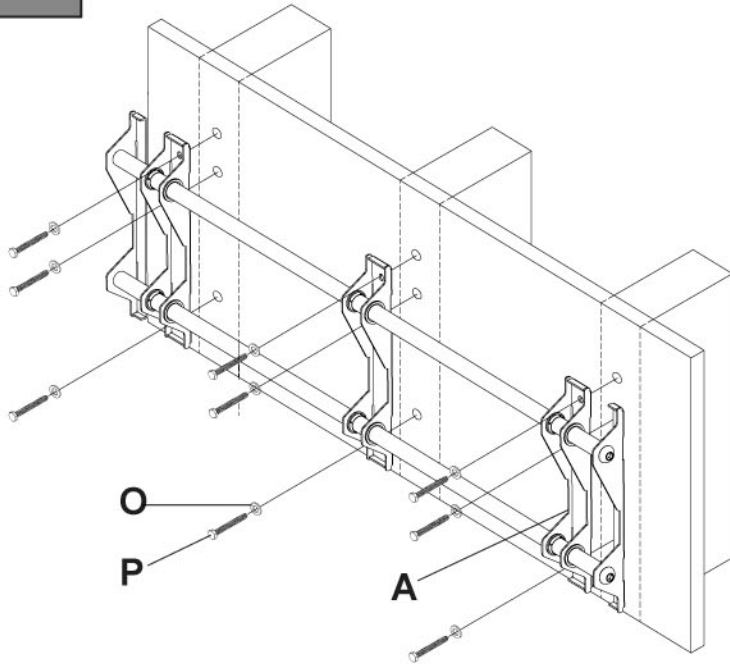
Verify that all holes are properly aligned, and then tighten screws using a crosshead screwdriver. Tighten screws so vertical arms are firmly attached. Do not tighten with excessive force. Overtightening can cause stress damage to screws.

# WALL BRACKET INSTALLATION

2a

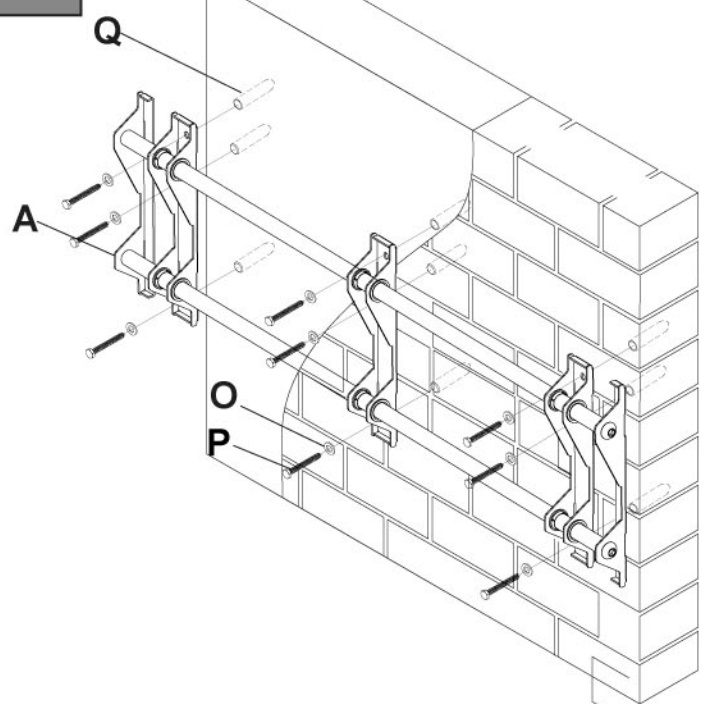
Choose location for Flat Screen Mount

STUD WALL



2b

CONCRETE / BRICK WALL



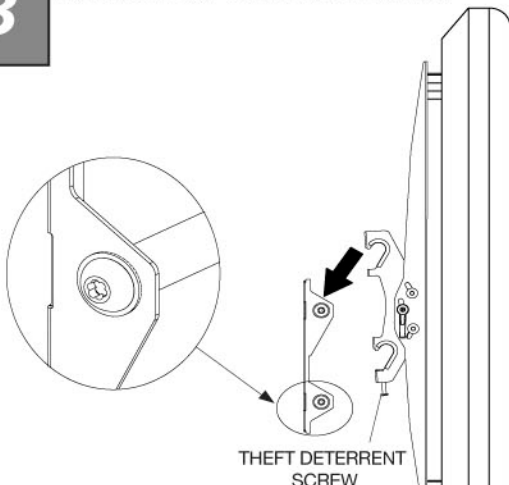
Put the wall plate (**Part A**) against the wall and mark through the desired position for the drilling holes. The 9 screws supplied should be distributed as evenly as possible to spread the load. The bracket should be mounted to 3 studs that are 16" apart, make sure that mounting screws are anchored into the center of the stud (a "stud locator" will help). Drill nine 1/4" diameter holes 70 mm deep.

If the only location is a concrete / brick wall, then it will be necessary to use suitable anchors/plugs. Depending on the wall (e.g. concrete wall), it is necessary to drill nine 3/8" (10mm) diameter dowel-holes beforehand (minimum depth of 84 mm). Put the wall plate against the wall (ensure plate is level) and mark through the desired position for the drilling holes. Use the 9 Screws (**Part P**), 9 washers (**Part O**) and 9 wall plugs (**Part Q**) provided. PLEASE PAY CAREFUL ATTENTION TO WHERE THIS MOUNT IS LOCATED. SOME WALLS ARE NOT SUITABLE FOR INSTALLATION. IF YOU INSTALL THIS WALL MOUNT ON DRYWALL IT MUST BE ANCHORED INTO A WOOD STUD, CONCRETE BLOCK OR BRICK BEHIND THE DRYWALL. INSTALLING ON DRYWALL ALONE WILL NOT SUPPORT THE WEIGHT OF A TELEVISION. WHEN DRILLING HOLES IT IS PARTICULARLY IMPORTANT TO TAKE CARE OF ELECTRICAL CABLES, WATER OR GAS PIPES IN THE WALL. IT IS IMPORTANT THAT ALL MOUNTING SCREWS SUPPLIED ARE USED.

Installer must verify that the supporting surface will safely support the combined load of the equipment and all attached hardware and components.

3

Hook screen onto Wall Bracket



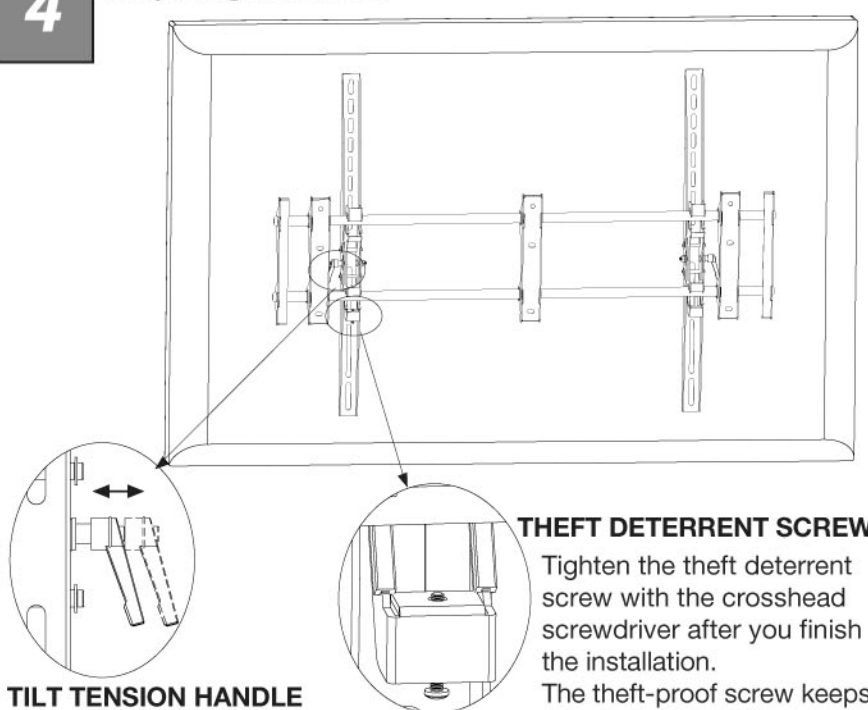
Hook Vertical arms (**Parts B and C**) onto wall plate (**Part A**).  
(This procedure may require 2 persons.).

**Note:** There is a hidden theft deterrent screw under the vertical arms, which keeps your TV from easily being removed.

Make sure the screw does not pass through the holes on the arms, as this can hamper the mounting procedure

4

Completing Installation



**TILT TENSION HANDLE**

The tilt tension handle, featured on the vertical arms, can be pulled out and away from the bracket and turned independently for tilt readjustment

**THEFT DETERRENT SCREW**

Tighten the theft deterrent screw with the crosshead screwdriver after you finish the installation.

The theft-proof screw keeps monitor brackets from being easily removed